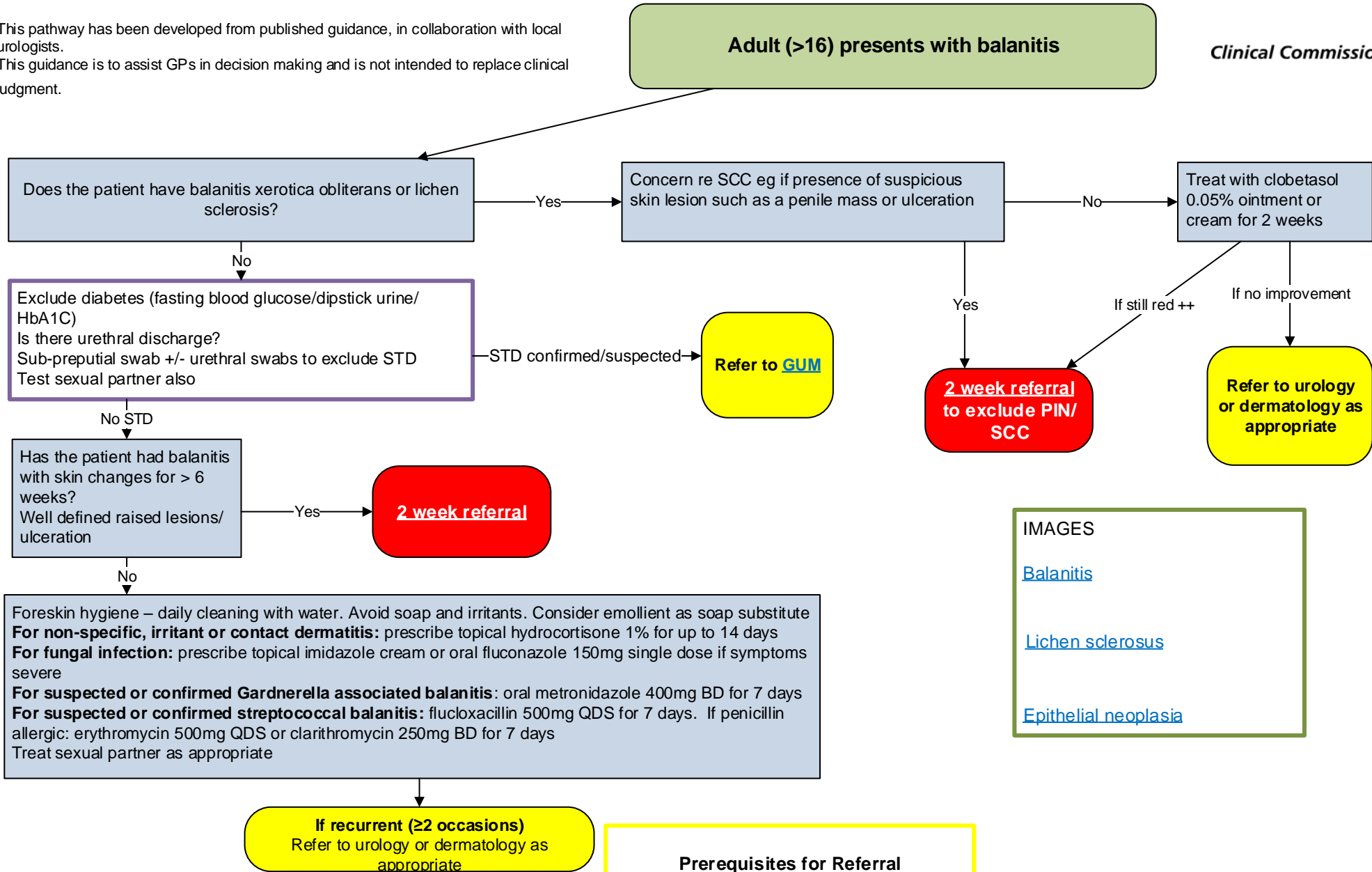


# Adult Balanitis pathway

This pathway has been developed from published guidance, in collaboration with local urologists.  
This guidance is to assist GPs in decision making and is not intended to replace clinical judgment.



IMAGES

[Balanitis](#)

[Lichen sclerosis](#)

[Epithelial neoplasia](#)

Comments & enquiries relating to medication:  
CCCG Medicines Management Team [mmt.camdenccg@nhs.net](mailto:mmt.camdenccg@nhs.net)  
Refer to current BNF or SPC for full medicines information

Clinical Contact for this pathway for queries: Dr Sarah Morgan  
([sarah.morgan1@nhs.net](mailto:sarah.morgan1@nhs.net))

**Prerequisites for Referral**  
HbA1C, STI screen (chlamydia + gonorrhoea), recurrence despite treatment on 2 occasions (± swabs, if taken)

Pathway created by NCL led by Camden CCG Clinical Cabinet + GB July 2016

Review due – March 2020